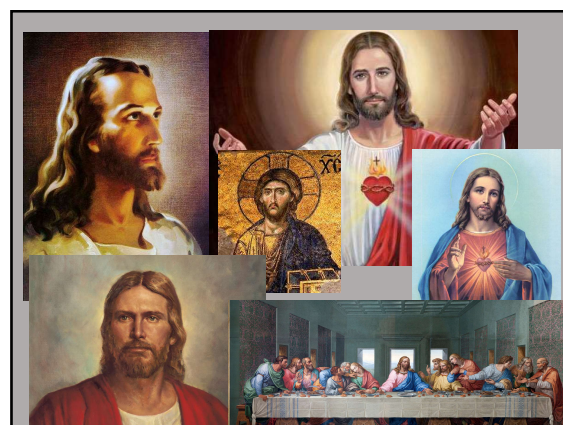




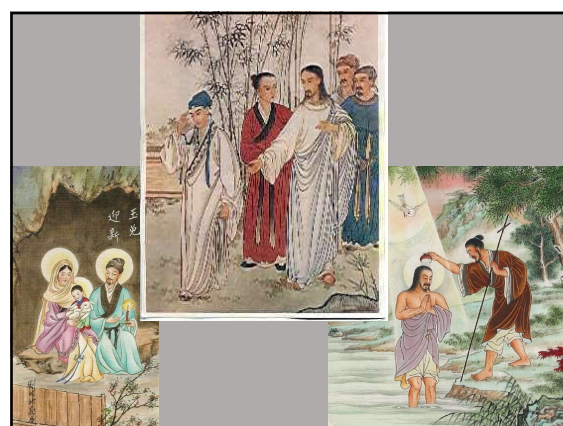
1



4



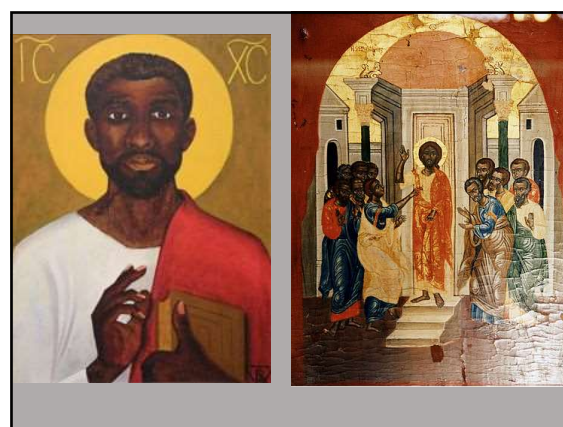
2



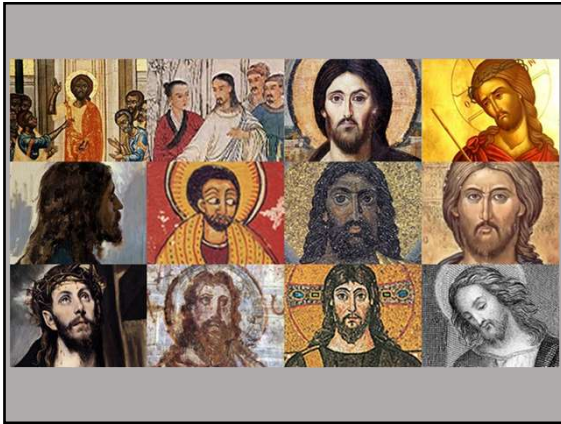
5



3



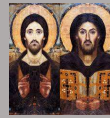
6



7

**Options**

- Fully God and not really human
- Fully human but not really God
- Part God and part human at the same time
- Part God and part human and flips back and forth



**Answer**

- The Church's eventual answer was that Jesus was fully God and fully human. Neither took away from the other or diminished the other.
- Mystery that is beyond our ability to explain but is the only answer to the Bible's testimony.

10



8



11

**Options**

- Fully God and not really human
- Fully human but not really God
- Part God and part human at the same time
- Part God and part human and flips back and forth



9

Mount of Olives



12

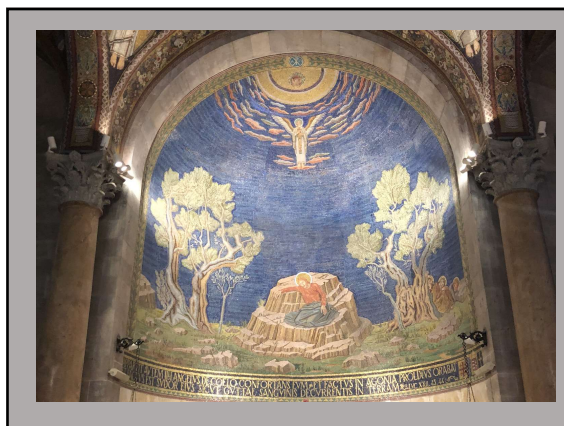




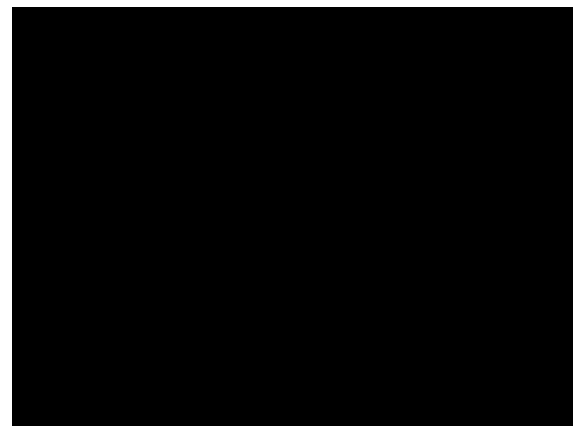
13



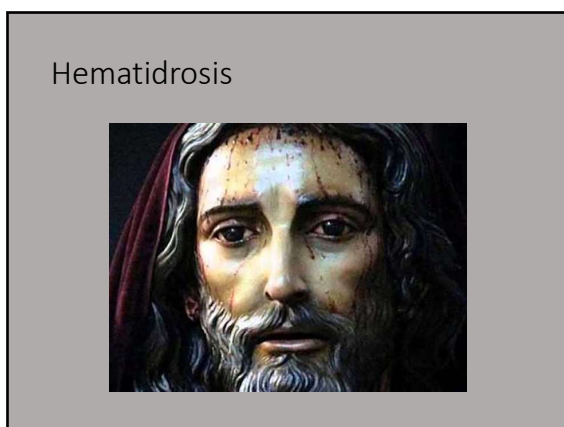
16



14



17



15