



A N N U A L
V I S I O N
A N D
P R A Y E R

“Teacher, which is the
GREATEST commandment
in the LAW?”

M A T T H E W 22 : 36

Jesus replied: “LOVE the LORD your
God with all your HEART and with all
your SOUL and with all your MIND.’
THIS is the first and GREATEST
commandment.”

J E S U S I N M A T T H E W 2 2 : 3 7 - 3 8



VISION Update

ELDER Update

Demographic STUDY Findings

PASTORAL Vision 2019

Corporate Worship & PRAYER



VISION Update



A LONG VISION for RSF

Building (years 1-7)

Establishing (years 8-14)

Flourishing (years 15-21+)





the season of ESTABLISHING
refinement & alignment

R E F I N E M E N T

Refining the *MISSION* and *VALUES* of our church so that they are understandable to *ALL*, especially the leaders, and effective in making *DISCIPLES* of Jesus in SF.

A L I G N M E N T

Aligning MINISTRY, events, sermon series, job descriptions, leadership development, Community Groups etc. to the MISSION and VALUES of Reality; so that, EVERY part of our church is moving towards the VISION we have in this city: A Community Following Jesus, Seeking Renewal in Our City.



refining our MISSION



a COMMUNITY
following JESUS, seeking
renewal in OUR CITY.
but this is POSSIBLE



Our MISSION:

“GO and make disciples of ALL nations, baptizing them IN the name of the FATHER and of the SON and of the HOLY SPIRIT, and teaching them to OBEY everything I have commanded YOU. And surely I am with you ALWAYS, to the VERY end of the age.”

M A T T H E W 2 8 : 1 9 - 2 0

and the *MISSION*
hasn't *CHANGED*.



M I S S I O N O F T H E C H U R C H

1 — The effective proclamation of the gospel to all humanity, making “disciples” of Jesus.

2 — The development and transformation of those disciples into the character of Christ Himself.

M I S S I O N + V I S I O N

1 — Mission: To
make disciples of
all nations, teaching
them to obey
everything Jesus
has commanded.

2 — Vision:
A community
following Jesus,
seeking renewal in
our city.

1 — Cultivating
intimacy with God

2 — Living in
Authentic
Community

3 — Becoming
Like Jesus

4 — Demonstrating
the Love of Jesus
in word and deed
in the city

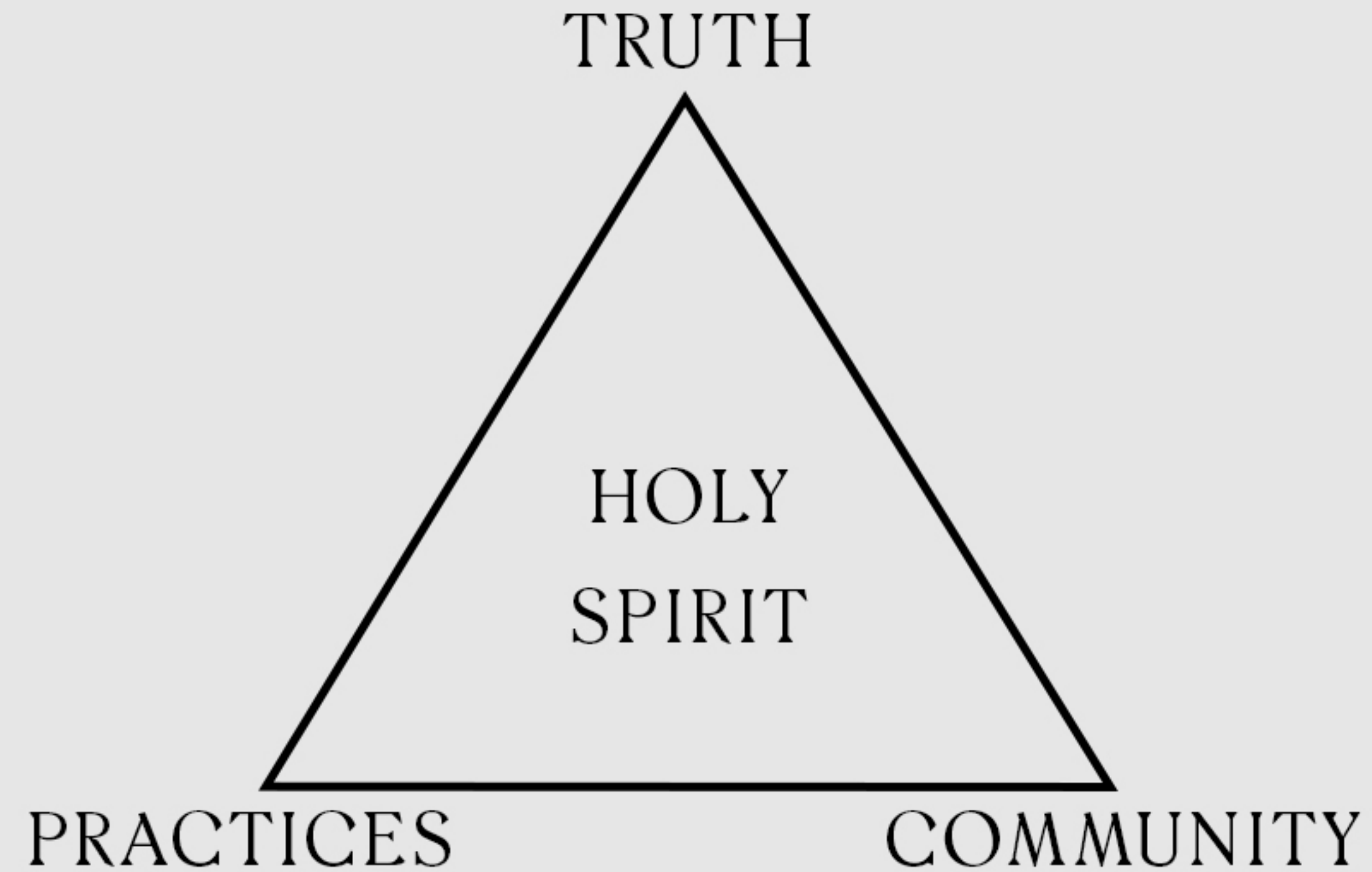


Be with Jesus
Become like Jesus
Do what Jesus did



a THEORY of CHANGE

Triangle of Transformation





We are a community
following Jesus, seeking
renewal in our city **BY**
being with Jesus,
becoming like Jesus, and
doing what Jesus did
THROUGH truth,
community, practice, and
the Holy Spirit.





ELDER Update



RUTHIE KIM



**THEOLOGICAL Lens of
WOMEN in the CHURCH**
How JESUS treated women
Pauline THEOLOGY
Pentecost
CREATION Narrative





Demographic SURVEY



JANET IKPA





First survey in 4 years
30 questions (8 follow-up)
1,721 respondents

S O M E O F W H A T W E L E A R N E D

1 — 50% of our church (50.7%) has been going to our church less than 2 years

2 — 60% said they were in Community at Reality and 49% said they were in a formal CG at Reality

3 — 27% of you said you serve in some capacity (i.e. CG, Sundays, Local Ministry Partners)

4 — 62.4 % of you give here



Pastoral VISION for 2019



H O W T O P R A Y I N 2 0 1 8

1 — Renewed
CG vision

2 — Leadership
care and
development

3 — Organizational
Health through
hiring an Executive
Director

4 — Expanded
Eldership

5 — Youth
Ministry and
Youth Minister
hire



Melissa Weinisch

Youth Minister

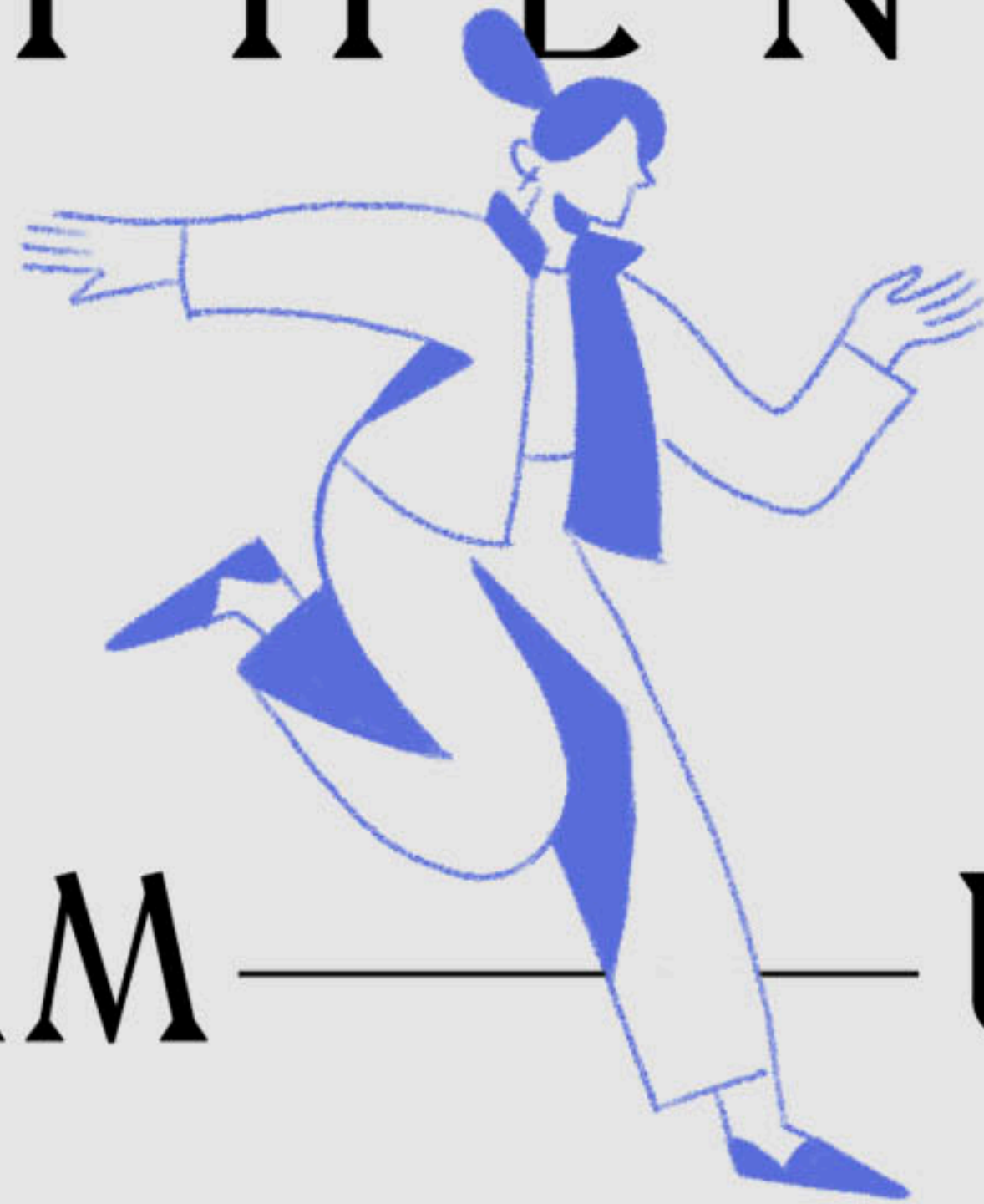
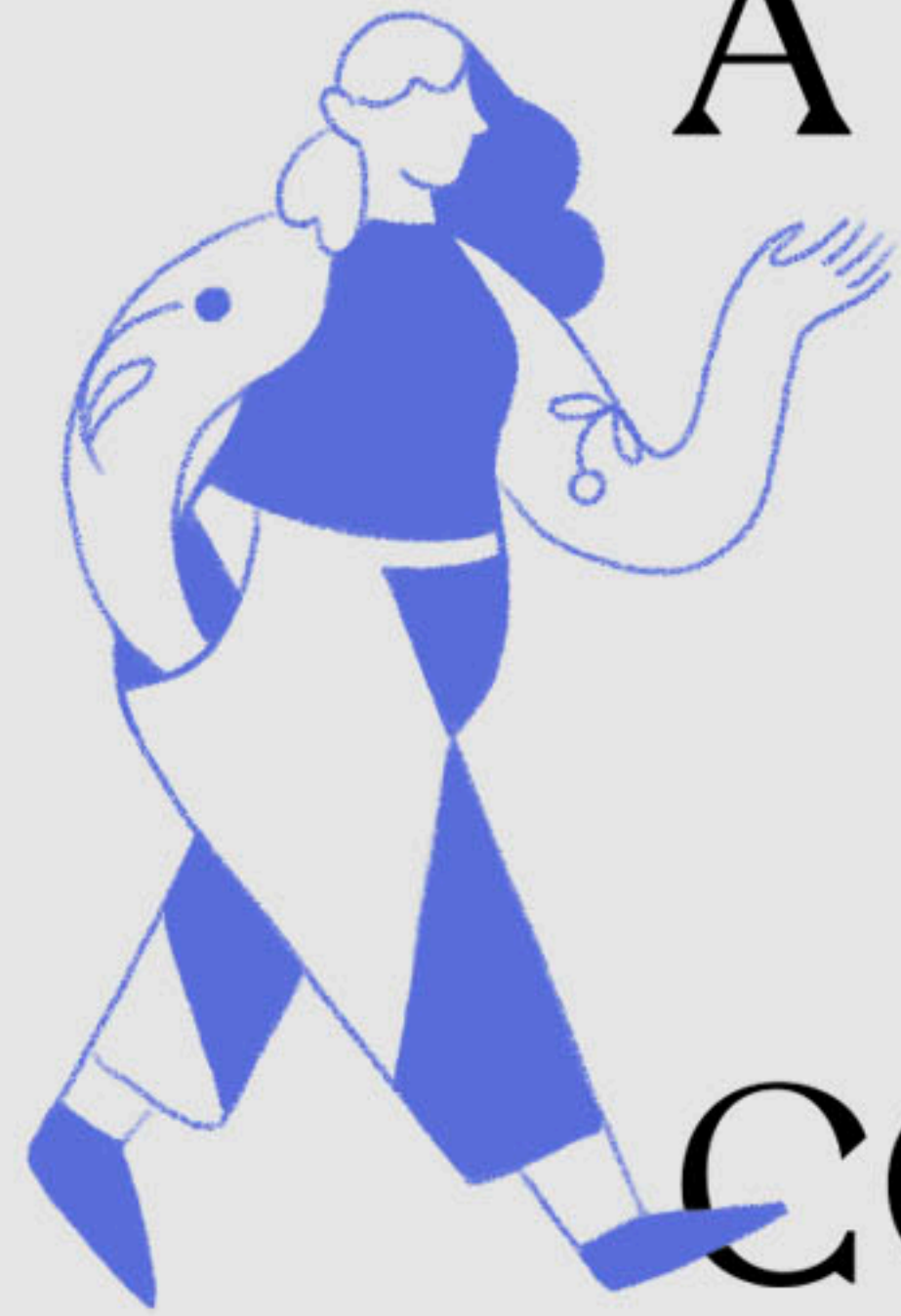


“And the SECOND is like it: ‘LOVE
your neighbor as yourself.’ All the
LAW and the PROPHETS hang on
these two commandments.”

J E S U S I N M A T T H E W 2 2 : 3 9 - 4 0

THE YEAR OF

AUTHENTIC



COMM

UNITY

higher ENGAGEMENT
and deeper
INVOLVEMENT in
community groups





build clear PATHWAYS
to leadership and
leadership
DEVELOPMENT



Men's Retreat
Women's Retreat
Marriage Conference
Dating Lectures
Difficult Conversations Training
Race Intensive 2.0
Sexuality Series & Lectures





2018 Year in REVIEW

update.realitysf.com